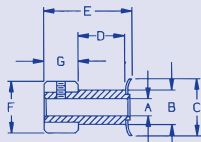


TIMING BELT PULLEYS 3 MM PITCH

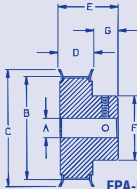
**FOR BELTS
6MM WIDE**

Tooth Profile

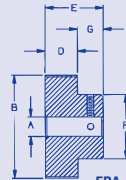
HTD® SERIES



FPA-F1 STYLE



FPA-F2 STYLE



FPA-F3 STYLE

Material: Aluminum Alloy.
Finish: Anodized.

Dimensions in inches. Not for use with FMX series belts.
For pure metric - please inquire. **See FPX-A1 for 3MM pitch HTD belts.**

Cat. No.	No. of Grooves	Bore +.001 -.000 A	Pitch Diameter	O.D. * B	Flange O.D. ±1/64 C	Face Width D	Overall Length ± 1/64 E	Hub Diameter ± 1/64 F	Hub Proj. G
FPA-F1-10	10	.125	.376	.346	.505	.282	9/16	.505	15/64
FPA-F1-11	11		.414	.384	.530			.530	
FPA-F1-12	12		.451	.421	.580			.580	
FPA-F1-13	13		.489	.459	.610			.610	
FPA-F1-14	14	.1875	.526	.496	.635	.386	11/16	.635	19/64
FPA-F1-15	15		.564	.534	.685			.685	
FPA-F1-16	16		.602	.572	.710			.710	
FPA-F1-17	17		.639	.609	.740			.740	
FPA-F2-18	18	.250	.677	.647	.790	.407	23/32	.442	19/64
FPA-F3-18	18		.714	.684	.815			.468	
FPA-F2-19	19		.752	.722	.895			.500	
FPA-F3-19	19		.827	.797	.945			.562	
FPA-F2-20	20	.250	.902	.872	1.025	.407	23/32	.625	19/64
FPA-F3-20	20		.940	.910	1.060			.625	
FPA-F2-22	22		.977	.947	1.105			.701	
FPA-F3-22	22		1.053	1.023	1.173			.776	
FPA-F2-24	24	.250	1.128	1.098	1.250	.407	23/32	.851	19/64
FPA-F3-24	24		1.203	1.173	1.323			.851	
FPA-F2-25	25		1.278	1.248	1.398			1.000	
FPA-F3-25	25		1.353	1.323	1.473			1.075	
FPA-F2-26	26	.250	1.429	1.399	1.549	.407	23/32	1.150	19/64
FPA-F3-26	26		1.504	1.474	1.625			1.150	
FPA-F2-28	28		1.654	1.624	1.775			1.300	
FPA-F3-28	28		1.805	1.775	1.850			1.300	
FPA-F2-30	30	.250	1.805	1.775	1.850	.407	23/32	1.300	19/64
FPA-F3-30	30		1.880	1.850	1.925			1.300	
FPA-F2-32	32		1.925	1.895	2.025			1.300	
FPA-F3-32	32		2.000	1.970	2.100			1.300	
FPA-F2-34	34	.250	2.075	2.045	2.175	.407	23/32	1.300	19/64
FPA-F3-34	34		2.150	2.120	2.250			1.300	
FPA-F2-36	36		2.225	2.195	2.325			1.300	
FPA-F3-36	36		2.300	2.270	2.400			1.300	
FPA-F2-38	38	.250	2.375	2.345	2.475	.407	23/32	1.300	19/64
FPA-F3-38	38		2.450	2.420	2.550			1.300	
FPA-F2-40	40		2.525	2.495	2.625			1.300	
FPA-F3-40	40		2.600	2.570	2.700			1.300	
FPA-F2-44	44	.3125	2.675	2.645	2.775	.407	47/64	1.300	21/64
FPA-F3-44	44		2.750	2.720	2.850			1.300	
FPA-F2-48	48		2.825	2.795	2.925			1.300	
FPA-F3-48	48		2.900	2.870	3.000			1.300	
FPA-F2-50	50	.3125	2.975	2.945	3.075	.407	47/64	1.300	21/64
FPA-F3-50	50		3.050	3.020	3.150			1.300	
FPA-F3-56	56		3.125	3.095	3.225			1.300	
FPA-F3-60	60		3.200	3.170	3.300			1.300	
FPA-F3-62	62	.3125	3.275	3.245	3.375	.407	47/64	1.300	21/64
FPA-F3-72	72		3.350	3.320	3.450			1.300	

HTD® Trademark Gates

* O.D. Tolerances - 10-26 grooves +.002, -.000
28-48 grooves +.003, -.000
50-72 grooves +.004, -.000

11-13 grooves 1 set screw
14-72 grooves 2 set screws @ 90°

NORDEX (800) 243-0986
In CT (203) 775-4877

48F