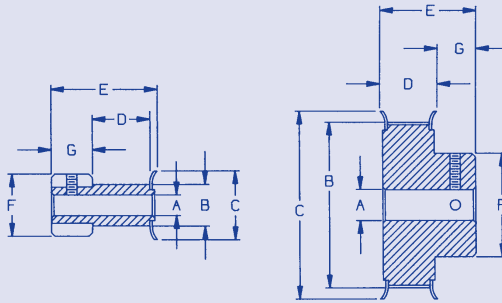


# TIMING BELT PULLEYS

0.080" PITCH

FOR  
BELTS  
1/8 WIDE



FVA-G1 STYLE

FVA-G2 STYLE

Material: Aluminum Alloy.  
Finish: Anodized.

Cat. No.	No. of Grooves	Bore +.001 -.000 A	Pitch Diameter	O.D. +.003 -.000 B	Flange O.D. ± 1/64 C	Face Width D	Overall Length ± 1/64 E	Hub Dia. ± 1/64 F	Hub Proj. G
FVA-G1-10	10	1/8	.255	.235	.425	.156	7/16	.425	15/64
FVA-G1-11	11		.280	.260	.450			.450	
FVA-G1-12	12		.306	.286	.480			.480	
FVA-G1-14	14	3/16	.357	.337	.530	.156	7/16	.530	15/64
FVA-G1-15	15		.382	.362	.555			.555	
FVA-G1-16	16		.407	.387	.580			.580	
FVA-G2-18	18	1/4	.458	.438	.635	.260 .156	31/64	.312	7/32
FVA-G1-18							7/16	.635	15/64
FVA-G2-20	20	3/16	.509	.489	.685	.260 .156	31/64	.364	7/32
FVA-G1-20							7/16	.685	15/64
FVA-G2-21	21	1/4	.535	.515	.710	.260 .156	31/64	.390	7/32
FVA-G1-21							7/16	.710	15/64
FVA-G2-22	22	3/16	.560	.540	.740	.260 .156	31/64	.390	7/32
FVA-G1-22							7/16	.740	15/64
FVA-G2-24	24	1/4	.611	.591	.790	.260	33/64	.442	1/4
FVA-G2-28	28		.713	.693	.895			.494	
FVA-G2-30	30		.764	.744	.945			.546	
FVA-G2-32	32		.815	.795	1.000			.598	
FVA-G2-36	36		.917	.897	1.105			.676	
FVA-G2-40	40		1.019	.999	1.210			.754	
FVA-G2-42	42	1.070	1.050	1.260	.806				
FVA-G2-44	44	1.120	1.100	1.315	.858				
FVA-G2-48	48	1.222	1.202	1.420	.936				
FVA-G2-60	60	1.528	1.508	1.730	1.222				

10-16 grooves supplied with 1 set screw  
18-60 grooves supplied with 2 set screws @ 90°

**NORDEX** See pages 58F and 59F for  
.080 pitch belts.

**(800) 243-0986**  
In CT (203) 775-4877

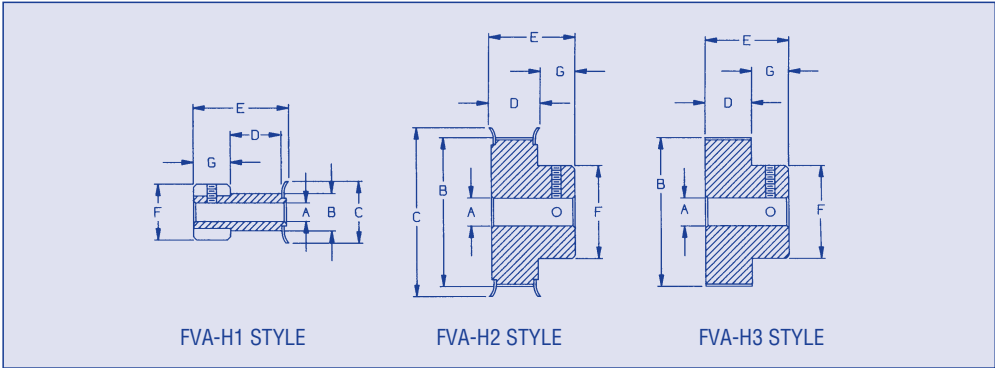
**62F**

F

# TIMING BELT PULLEYS

0.080" PITCH

**FOR  
BELTS  
1/4 WIDE**



**Material:** Aluminum Alloy.  
**Finish:** Anodized.

See pages 58F and 59F for  
.080 pitch belts.

Cat. No.	No. of Grooves	Bore +.001 -.000 A	Pitch Diameter	O.D. +.003 -.000 B	Flange O.D. ±1/64 C	Face Width D	Overall Length ±1/64 E	Hub Dia. ±1/64 F	Hub Proj. G
	10 11 12	.125	.255 .280 .306	.235 .260 .286	.425 .450 .480	.285	9/16	.425 .450 .480	15/64
	14 15 16		.1875	.357 .382 .407	.337 .362 .387			.530 .555 .580	
	18	.250		.458	.438	.635	.389 .285	5/8 9/16	
	20	.1875 .250	.509	.489	.685	.389 .285	5/8 9/16	.364 .685	
	21	.1875 .250	.535	.515	.710	.389 .285	5/8 9/16	.390 .710	
	22	.1875	.560	.540	.740	.389 .285	5/8 9/16	.390 .740	
FVA-H2-24 FVA-H2-25 FVA-H2-28 FVA-H2-30 FVA-H2-32	24 25 28 30 32	.250	.611 .637 .713 .764 .815	.591 .617 .693 .744 .795	.790 .815 .895 .945 1.000	.389	11/16	.442 .468 .494 .546 .598	
FVA-H2-36 FVA-H2-40 FVA-H2-42 FVA-H2-44 FVA-H2-48	36 40 42 44 48		.917 1.019 1.070 1.120 1.222	.897 .999 1.050 1.100 1.202	1.105 1.210 1.260 1.315 1.420			.405	
FVA-H2-60 FVA-H3-60	60		1.528	1.508	1.730			1.222 1.148	
FVA-H3-72 FVA-H3-80 FVA-H3-90 FVA-H3-100 FVA-H3-120	72 80 90 100 120	.3125 .375	1.833 2.037 2.292 2.546 3.056	1.813 2.017 2.272 2.526 3.036	-	.375	3/4	1.195 1.500	

**63F (800) 243-0986**  
In CT (203) 775-4877

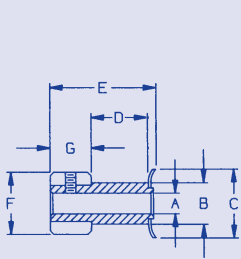
10-16 grooves supplied with 1 set  
screw 18-120 grooves supplied  
with 2 set screws @ 90°

**NORDEX**

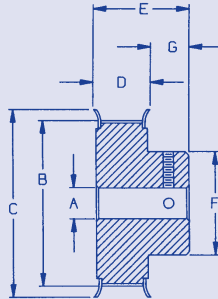
# TIMING BELT PULLEYS

0.080" PITCH

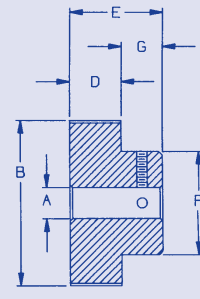
**FOR  
BELTS  
3/8 WIDE**



FVA-J1 STYLE



FVA-J2 STYLE



FVA-J3 STYLE

**Material: Aluminum Alloy.  
Finish: Anodized.**

See pages 58F and 59F for  
.080 pitch belts.

Cat. No.	No. of Grooves	Bore +.001 -.000 A	Pitch Diameter	O.D. +.003 -.000 B	Flange O.D. ±1/64 C	Face Width D	Overall Length ±1/64 E	Hub Dia. ±1/64 F	Hub Proj. G								
	10 11 12	.125	.255 .280 .306	.235 .260 .286	.425 .450 .480	.410	11/16	.425 .450 .480									
	14 15 16		.357 .382 .407	.337 .362 .387	.530 .555 .580					.635 .312							
	18		.250 .1875	.458	.438						.635 .312						
	20	.250 .1875	.509	.489	.685 .364												
	21	.250 .1875	.535	.515	.710	.390	.740 .390										
	22	.250 .1875	.560	.540	.740	.390											
	24 25 28 30 32	.250	.611 .637 .713 .764 .815	.591 .617 .693 .744 .795	.815 .895 .945 .945 1.000	.514	13/16	.442 .468 .494 .546 .598	15/64								
	36 40 42 44 48		.917 1.019 1.070 1.120 1.222	.897 .999 1.050 1.100 1.202	1.105 1.210 1.260 1.315 1.420					.530	27/32	.676 .754 .806 .858 .936	5/16				
FVA-J3-60	60		1.528	1.508	1.730									.500	7/8	1.222 1.148 1.195 1.500	3/8
FVA-J3-72	72		1.833	1.813	-												
FVA-J3-80	80		2.037	2.017	-												
FVA-J3-90	90	2.292	2.272	-													
FVA-J3-100	100	2.546	2.526	-													
FVA-J3-120	120	.375	3.056	3.036	-	-	-	-									

**NORDEX**

10-16 grooves supplied with 1 set  
screw 18-120 grooves supplied  
with 2 set screws @ 90°

**(800) 243-0986**  
In CT (203) 775-4877

**64F**